

WE PUT THE
ACCENTTM

ON PERFORMANCE, RELIABILITY, CONTROL,
SERVICE-ABILITY AND VALUE



**CHANGING
TEMPERATURE
CONTROL TECHNOLOGY**

Designed for space conservation, the Delta-Therm Accent evolved out of temperature control engineering advancements and customer demands. It's the temperature control unit you've been asking for!

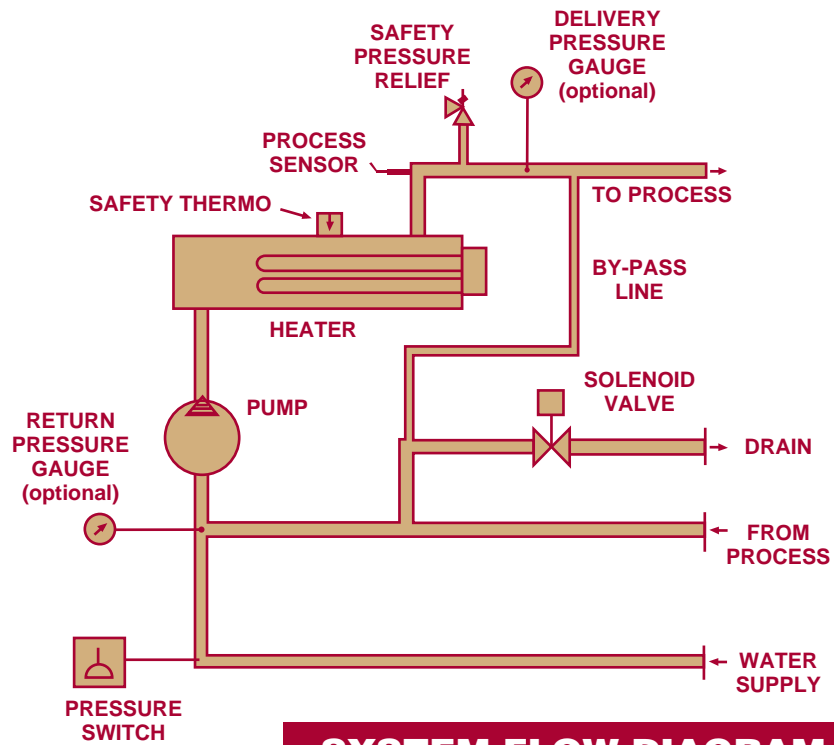
**A COMPANY DEDICATED
TO CHANGE**

In engineering principles, "Δ T" represents a change in temperature. At Delta T Systems, we're constantly changing to meet and exceed the needs of our customers. Our products are the result of listening to what our customers say and implementing over a century of staff experience and engineering know-how.

SPECIFICATIONS ►

STANDARD ACCENT FEATURES

- Microprocessor-based, PID, dual display digital controller
- Mercury contactor
- Horizontal pump
- Over temperature protection
- High pressure safety release valve protection
- Low water pressure protection
- Fused motor and transformer
- Pump overload protection
- Grounded control circuit
- Pilot lights indicating separate functions of unit (power on, heating or cooling)
- Fully insulated heater tank for greater system efficiency and energy conservation
- Solid cabinet design providing structural integrity of unit
- NEMA 1 electrical specifications and wiring in conformance with NEC electrical codes



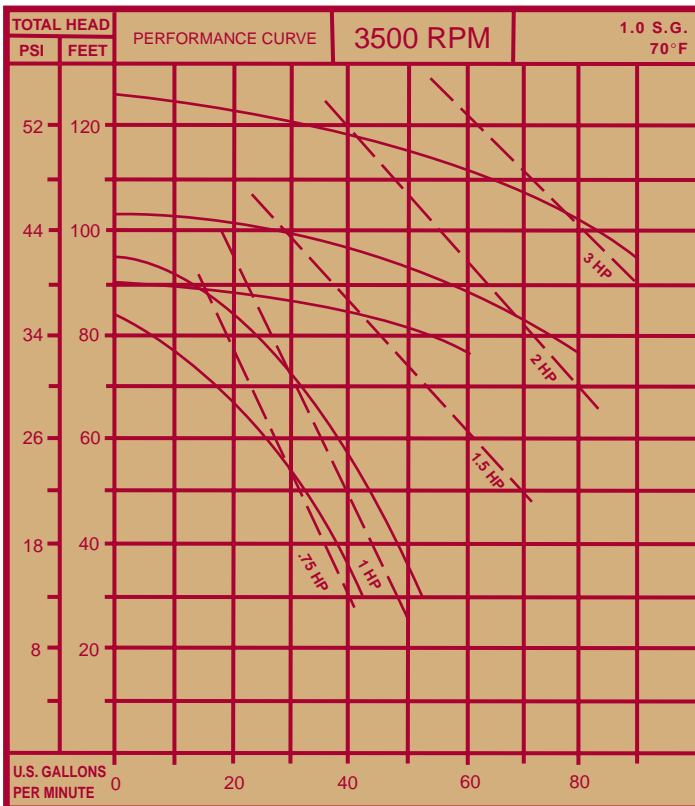
SYSTEM FLOW DIAGRAM

SPECIFICATIONS (MODEL AB-431)

- 9KW low watt density heater
- 3/4 HP pump with 30 GPM@22PSI capacity
- Cooling valve - 1/4" with 9/32 orifice
- 250°F (121°C) fluid operating temperature
- Dimensions: 16"W - 30"D - 26"H

OPTIONS AND ACCESSORIES

- 4.5 KW and 12 KW heater
- Delivery and return gauges
- Larger solenoid valves
- Machine interfacing capability through RS 232 or 485 communications port
- Pumping capacities up to 3 HP
- Audible and visual alarm
- Automatic venting
- Incorrect pump rotation indication
- For options not listed, please consult our factory



FLOW CHART



FOR FURTHER INFORMATION, PLEASE CALL OUR TOLL FREE NUMBER:
 OR WRITE US AT DELTA T SYSTEMS, INC., 2171 HIGHWAY 175, RICHFIELD, WI 53076
 FAX: 414-628-0332, E-MAIL: experience@deltatsys.com

1-800-733-4204