



HIGH TEMPERATURE LOW PROFILE



- 300°F Operating Temperature
- Compact Design
- Fully Featured
- Exceptional Value

Name brand components. features you won't find anywhere else. at a price you will find surprisingly competitive. The Delta Therm COMPACT Oil Unit gives you more.

DELTA T SYSTEMS

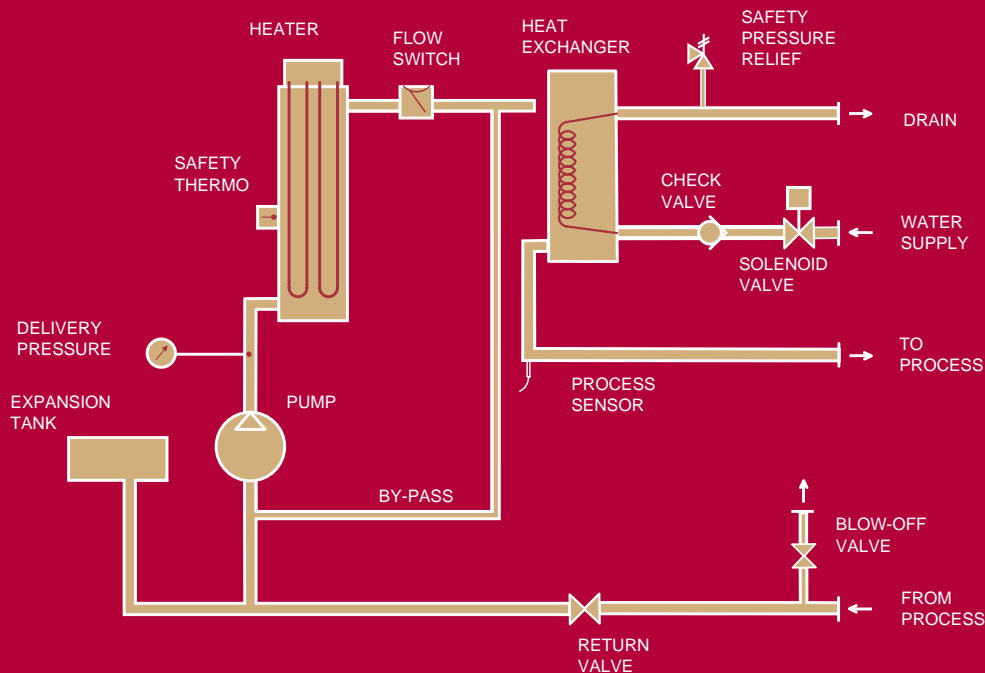
I N C O R P O R A T E D

2171 Hwy. 175 • Richfield, Wisconsin 53076
Performance ▲ Reliability ▲ Integrity ▲ Service

WWW.DELTATSYS.COM

1-800-733-4204

SYSTEM FLOW DIAGRAM



Standard Features Include:

- 6KW flanged heater
- 1.5 sq ft shell and tube heat exchanger for cooling
- Centrifugal pump delivering 10GPM @ 30PSI
- Flow switch to protect the pump, heating element and heat transfer fluid
- Fused motor protection
- Fused heater protection
- Fused transformer protection on both primary and secondary sides
- Motor overload protection
- Long life IEC motor starter
- Off-the-shelf microprocessor-based PID controller (dual display)
- Mercury heating contactor
- Over temperature protection
- 8 gallon reservoir tank for filling and expansion
- Pressure gauge showing delivery pressure to process
- Pilot lights to indicate separate functions (Power on, Heating, and Cooling Functions)
- Equipment built to NEMA 1 Specifications

Options and Accessories:

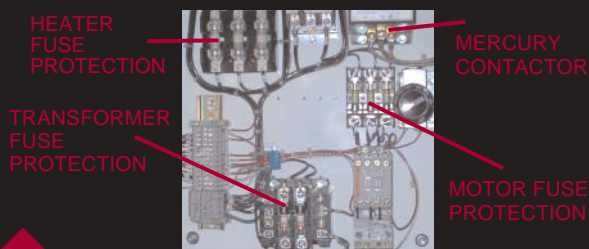
- Heating only or cooling only functions
- Increased cooling capacities
- Increased pumping capacities
- Controller options including communication protocols - SPI, 4-20mA, MODBUS, etc.
- Audible or visual alarms
- Options not listed - consult factory

Specifications:

- Single zone compact hot oil unit
- Rated to a maximum operating temperature of 300°F
- Features a 6KW heater with 1.5 square foot heat exchanger for cooling
- Digital dual display microprocessor-based control
- Heat transfer fluid is pumped at the rate of 10 GPM @ 30 PSI
- Dimensions: 16"W x 30"D x 26"H

ELECTRICAL CONTROL PANEL

- NEC electrical code conformance
- Fully fused power components (Heater, Transformer, Motor)
- Grounded control circuit
- Hermetically sealed mercury contactor provides for long maintenance-free operation



DELTA ▲ THERM

DELTA ▲ T SYSTEMS

INCORPORATED

2171 Hwy. 175 • Richfield, Wisconsin 53076

Performance ▲ Reliability ▲ Integrity ▲ Service

WWW.DELTATSYS.COM

1-800-733-4204